

CAROLINE HARRIS  
CORPORATE PROJECT  
ID 3624: ID STUDIO IV  
SPRING 2019



CONCEPT IMAGES



Repetition of materials and light sources throughout to create wave-like visuals

A combination of muted colors and natural looking materials like 60's station wagons

The shape and form of surfboards

1960 color scheme

A mix of natural elements



COMPANY PROFILE

A clean wave is defined as “a wave that breaks from a single peak along it's length, providing an open face for a surfer to ride on.” It is smooth and crisp and creates the perfect line for a surfer to follow. Clean Wave surf shop creates the perfect board for surfers to use to chase those waves. Clean Wave also sells the best wet-suits, sunscreen, and everything else needed for a classic day on the waves. A surfing background isn't even required because each shop has professional surfers on staff who teach lessons every week. With locations all across Hawaii and California, Clean Wave is the shop for beginners and for those who were born on the water.

BUSINESS GOALS

- Be inclusive to beginners, expert surfers, and everyone in between
- Design boards thoughtfully, to be stylish and powerful
- Reduce their footprint to embody a “green” company
- Embody the 1960s “golden age” of surfing
- Hire staff from around the world with one common love: surfing


WORKPLACE DESIGN GOALS


- Allot similar amounts of space for all employees so everyone is included in the same way
- Draw inspiration from the shape and form of surf boards
- Use recycled materials as possible
- Incorporate 1960s surf ideas with modern design
- Layout the space in a way that people from varying backgrounds will feel equally comfortable


STACKING DIGAGRAM


10th Floor (~18,00 SF)				
HRM	HRA	HRIT	COMMON AREA 1ST FLOOR	MT
1,498	5,287	3,955	4,451	3,256
9th Floor				
C.A. 2ND FLR	Training Area			TT
2,287	10,002			5,581


KEY:


 BUILDING CORE


 HRIT


 HRA

 TT

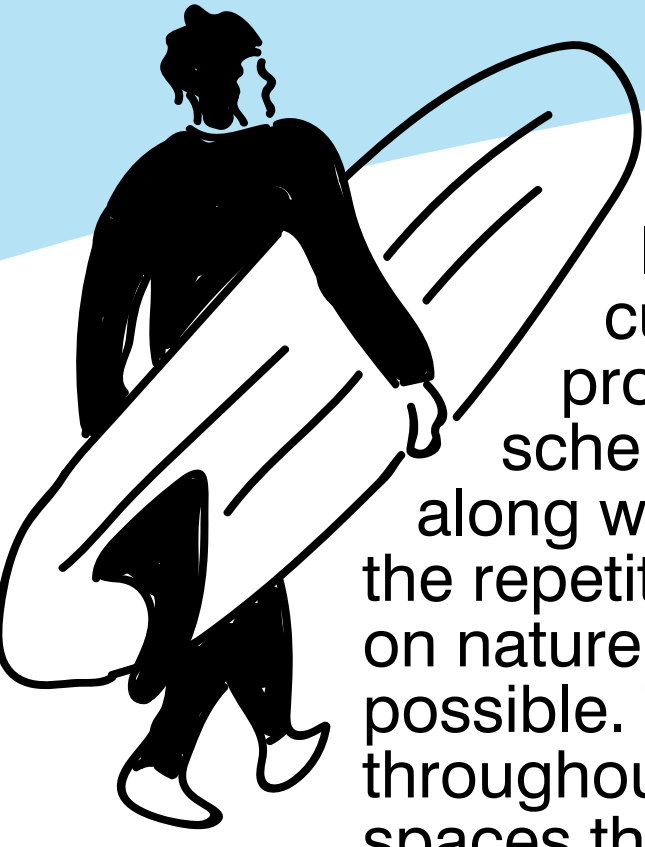
 COMMON AREA

 HRM

 MT

 TRAINING

CONCEPT



The 1960s were the golden age of surfing – Clean Wave is working to bring that back to today's society. Inspiration derived from the classic 1960's “soul surfer” culture is combined with today's modern touches, all produced in the eco-friendliest way possible. A retro color scheme meets the wood details of “woodie” station wagons along with the form of classic surf boards, all combined with the repetition found in crashing waves. The design has a focus on nature with natural fabrics and details used as much as possible. The shape of different board styles will be repeated throughout the space in fabrics and décor. This all happens in spaces that combine community with a modern aesthetic.

RESEARCH POINTS:

- Spaces are needed where employees can decompress and restore their mental energy in order to create a productivity-boosting workplace
- Windows provide: access to environmental information, access to sensory changes, feeling of connection to the outside world, and restoration
- Collaborative spaces of different sizes are necessary because collections of people work best when they fit in a space – neither crowded or spread apart over unnaturally large distances
- Mentally strenuous tasks are best done in spaces with more calming colors



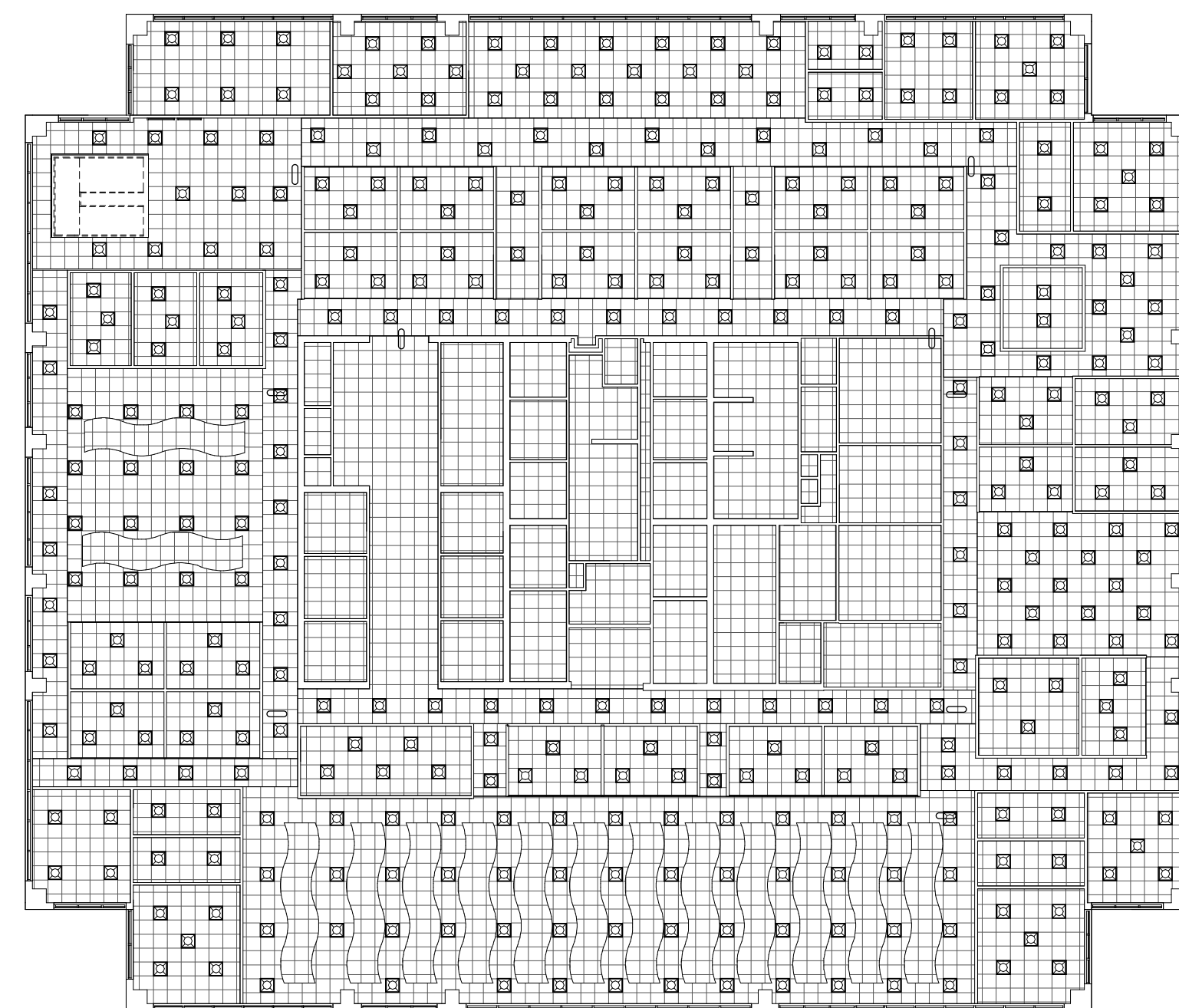
TENTH FLOOR  
COLOR CODED FLOORPLAN  
(NOT TO SCALE)



NINTH FLOOR  
COLOR CODED FLOORPLAN  
(NOT TO SCALE)



2 x 2 ACT ceiling hung at 10' A.F.F.



LEVEL NINE REFLECTED CEILING PLAN  
SCALE: 1/16" = 1'-0"

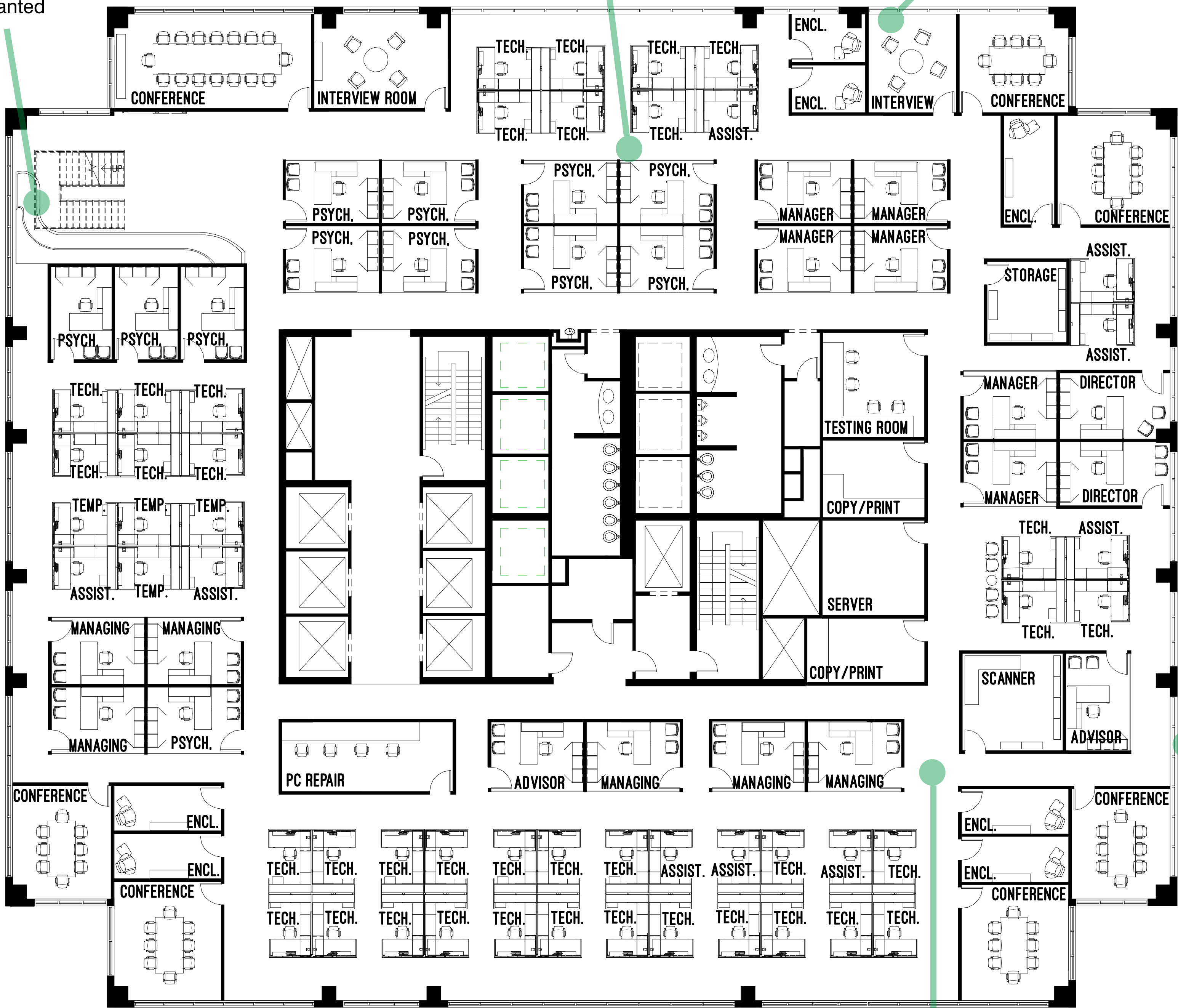
LIGHTING LEGEND

	Air supply
	Air return
	2 x 2 LED troffer
	LED exit signage
	Optima L canopy in custom wave shape

Built-in seating at the bottom of the stairs can be used as an impromptu meeting space or for solo work as wanted

Majority of offices include a glass curtain wall to encompass a visual sense of community, while equally allowing privacy

Interview rooms have lounge style seating to create a welcoming environment.



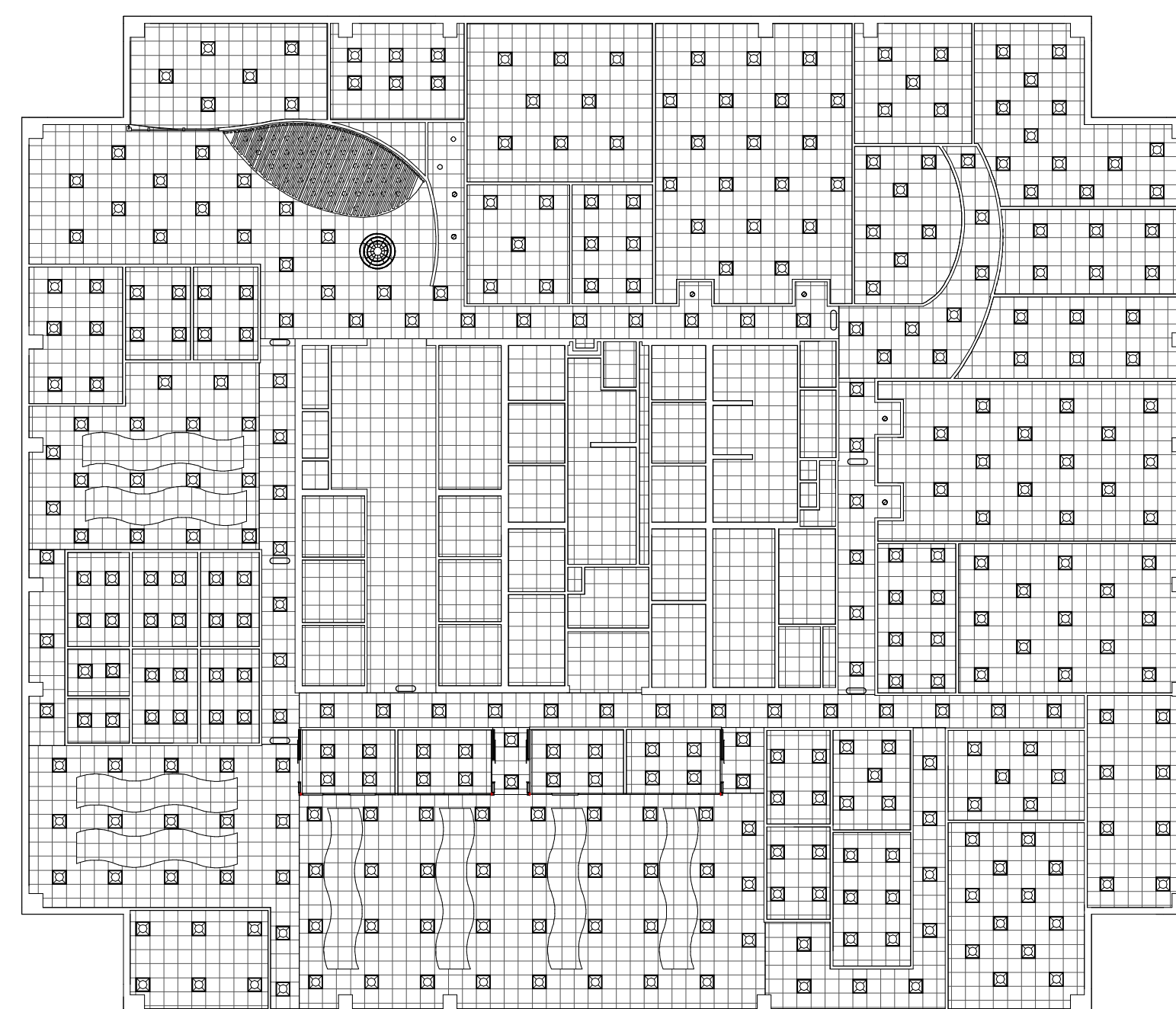
Exterior windows are available for everyone to enjoy because research shows that natural light can improve moods and work ethic.

Hallways and corridors are wider to allow for conversation and connection, all while continuing circulation

LEVEL ONE



2 x 2 ACT ceiling hung at 10' A.F.F.



LEVEL NINE REFLECTED CEILING PLAN  
SCALE: 1/16" = 1'-0"

#### LIGHTING LEGEND

	Air supply
	Air return
	2 x 2 LED troffer
	LED exit signage
	Optima L canopy in custom wave shape
	8" recessed can
	Aro Cluster pendent

The lobby is spacious with a large quiet room on the side to create a space where individuals coming for training can mingle and connect, or step into the quiet area as needed.

The soft curves of walls mimic ocean currents and help ease the flow of traffic.



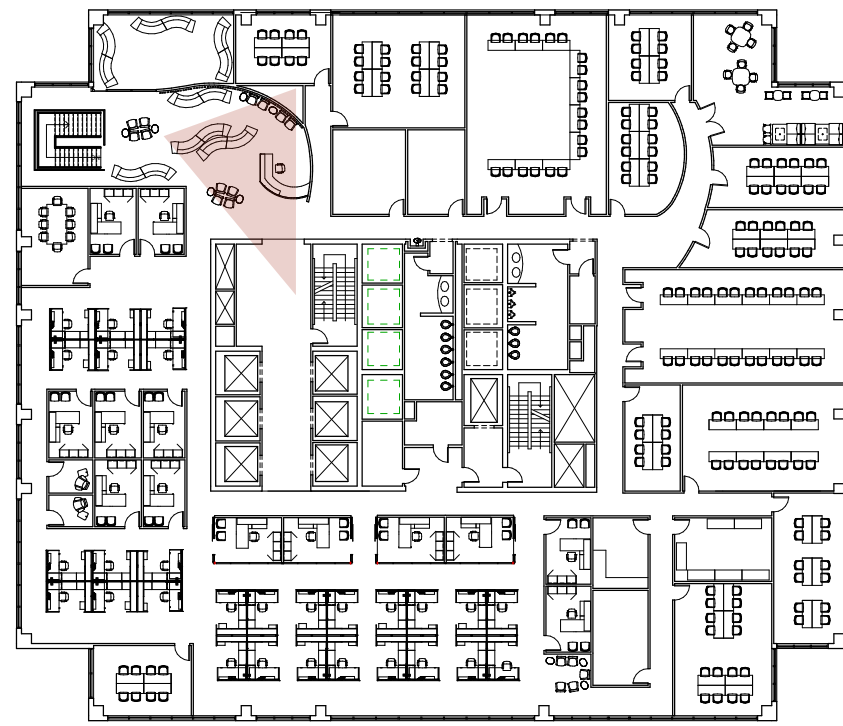
The training area furniture is all on wheels to accommodate different room layouts as different situations arise.

Conversation area that is a place to rest or meet in a small group.

LEVEL TEN FLOORPLAN  
SCALE: 3/32" = 1'-0"

# LEVEL TWO





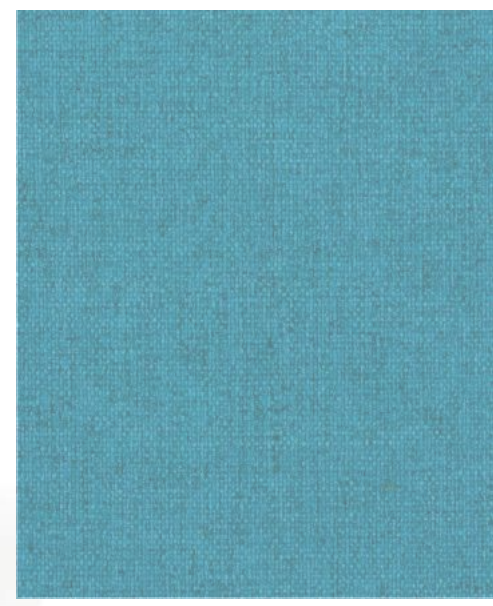
Level Ten  
Floorplan  
(Not to scale)

## RECEPTION PERSPECTIVE

The custom built wooden structure has repeated planks that parallel the rhythmic movement of ocean waves. The structure is wooden to bring in natural elements and to hint at the “woodie” station wagon that was a favorite among surfers in the 1960s. The Circa Lounge system is also wave-like in shape and is upholstered in a custom fabric. The front desk is covered in bio-glass, a recycled glass that has hues of blue and green.



Embrace Chair



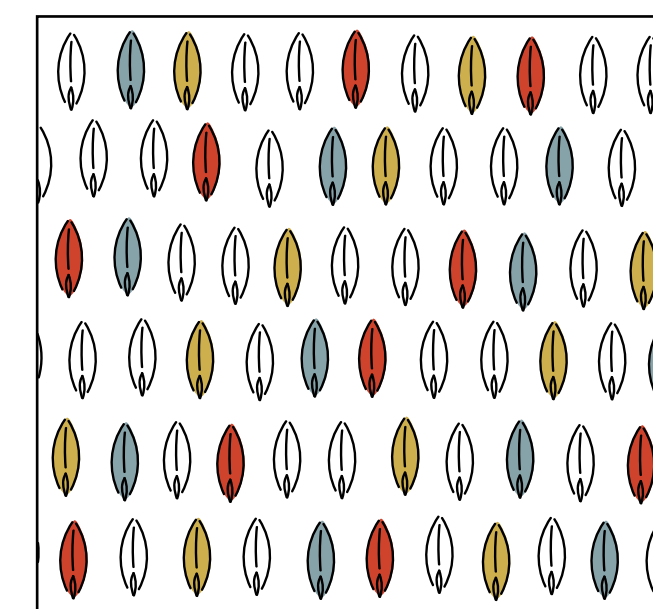
Aegan Fabric



Bio-glass



Circa Lounge



“Akaw!” -- The name comes from an old-school surfer phrase that is used when someone sees the perfect wave. This surprised and thrilled phrase is the embodiment of Clean Wave’s culture: enjoying the moment while being excited about what’s to come. The pattern includes small surfboards. From far away they may seem like dots, but as you get closer, you see the distinct board shape; much like how a wave doesn’t look like much until it gets closer to shore.

RECEPTION

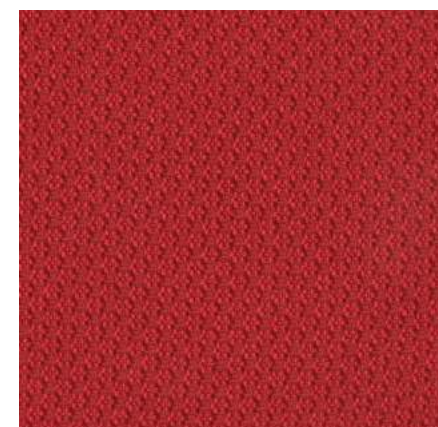




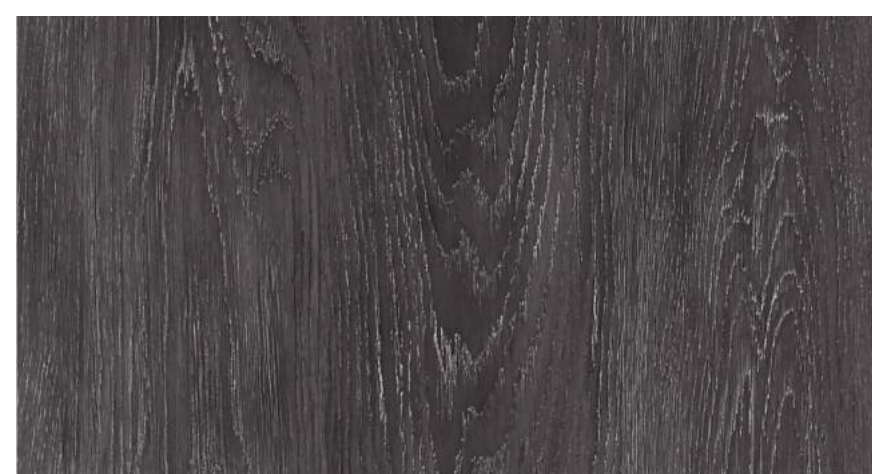
Level Ten Floorplan  
(Not to scale)



Gesture Chair



Brick Fabric



Frame Work LVT

## WORKSTATION PERSEPCTIVE

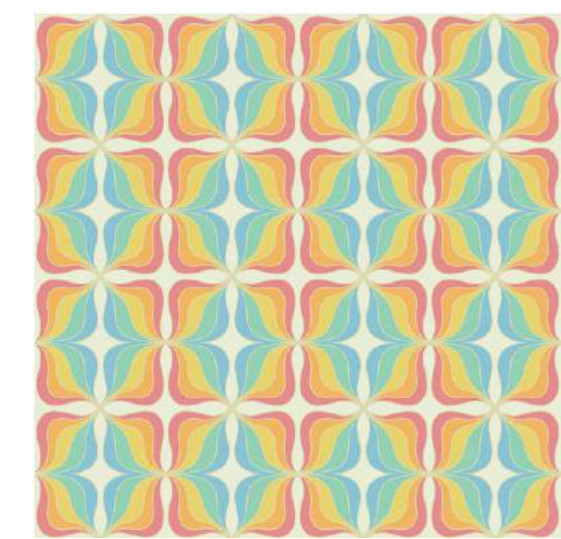
The workstations are paralalled with a custom designed Optima L canopy panels on the ceiling in a wavy shape. The geometric lines of the workstations contrast with the organic panel to create visual interest and excitement throughout the space. As research shows, calming colors, such as blue, aide in focus on mentally strenuous tasks. Because of this, the workstation panels are blue, with one white panel in the middle, to create a visual break.

# WORKSTATIONS

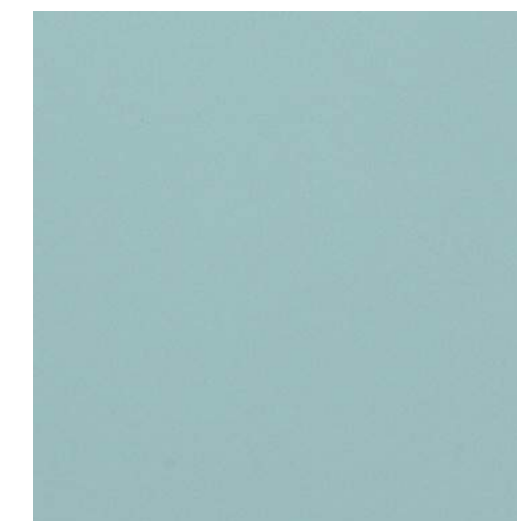




Level Ten  
Floorplan  
(Not to scale)



Chromatic Wallcovering



Alfresco Fabric

## STAIRCASE PERSPECTIVE

A custom bench system is located at the bottom of the stairs for impromptu meetings, quick conversations, or even individual work. The retro wallcovering contrasts with the sleek built-in seating to convey the 1960's "golden age of surfing" in modern day.

# STAIRCASE